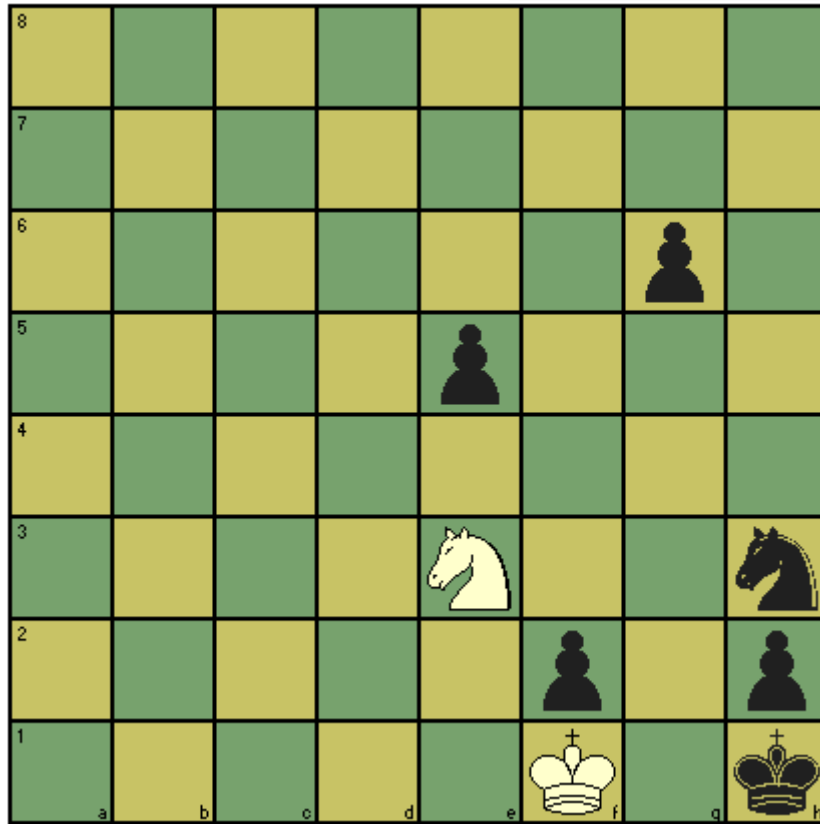


CHESS T' MINIT puzzle – June 2015

This month's puzzle is a nice problem created by Ado Kramer in 1926. White to checkmate Black in 4 moves



Solution . **1.Nd1** If 1.Ng4? e4! White is in some trouble, he has lost the mate. Now only 2. Ne3 saves him from immediate defeat. If 1.Nd5? White doesn't lose the mate 1...Nf4 2.Nc3 but he will have to cycle back to the correct square of d1 and mate in eight moves, rather than four. **1...e4 2.Nc3 e3 3.Ne2 g5 4.Ng3#**