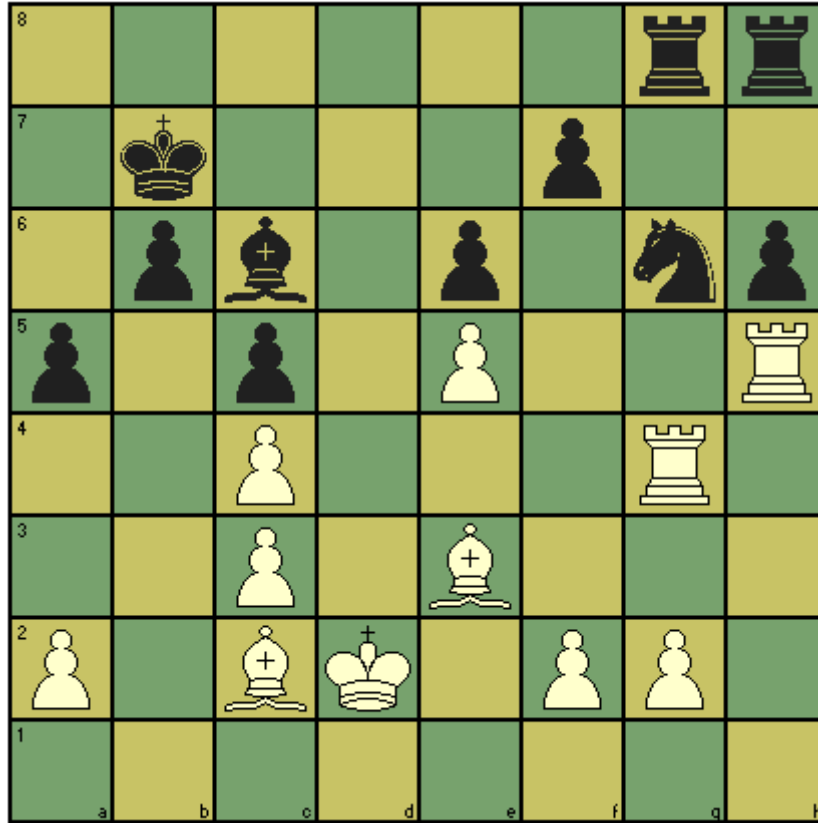


CHES T' MINIT puzzle – February 2015

This month's puzzle comes from the 2014 World Chess Championship and is a rare double blunder at this level (but more typical of Club Chess play). Carlsen playing White had just moved his king from the c1 square, leaving Anand the chance to change the game – in fact he took 12 seconds and moved his pawn to a4, losing quickly. The question is, what move should black have played?



Solution: 26... Nxe5 27. Rxg8 Nxc4+ 28. Kd3 Nb2+ 29. Ke2 Rxg8 30. Rxh6. This line of play would have dramatically changed the game.