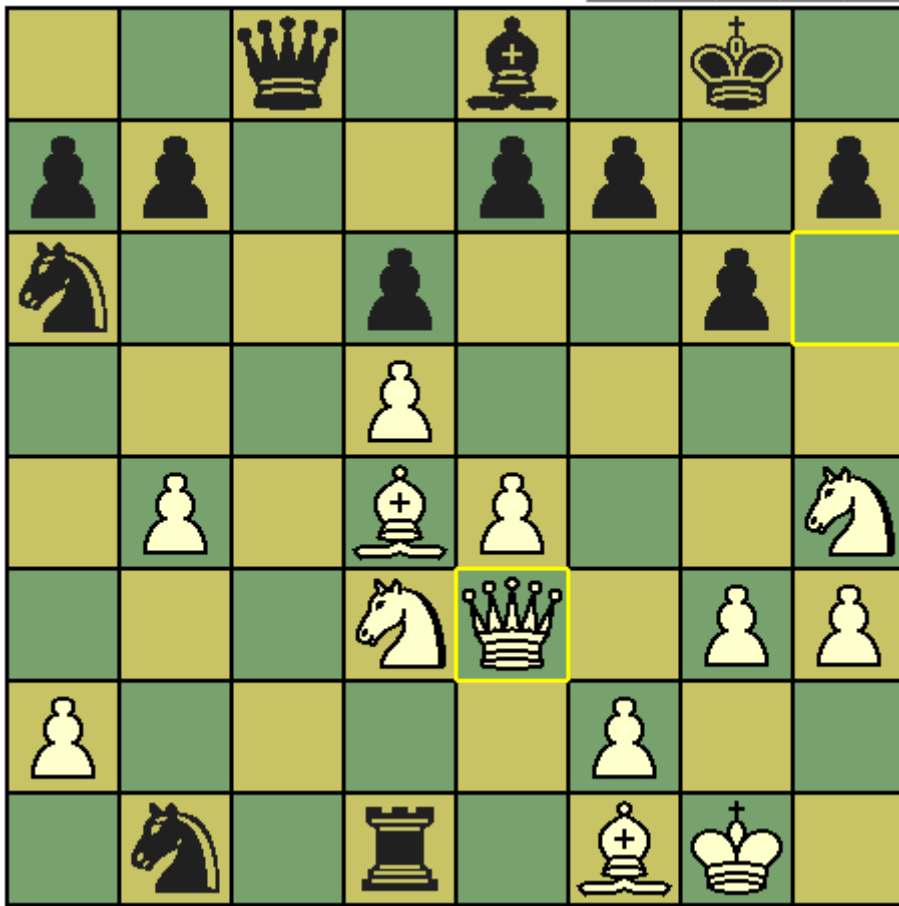


CHESST' MINIT puzzle – July 2014

With the World Cup Final in Brazil being played this month and the Chess Olympiad starting shortly in Norway, this month's puzzle comes from a brilliant game by Grandmaster Simen Agdestein, who played both chess and football for Norway (but alas never played in a World Cup). The position shown comes from a 1994 game played between Agdestein and the British Grandmaster Michael Adams. In a complex position, find the move which white played to force instant resignation.



Solution 1. Nf5!! (if 1 ... gxf5 2. Qg5+ and 3. Qg7# , otherwise either 2. Nxe7+ forking or 2. Qh6 and 3. Qg7#).
 Note that 1. Qh6 fails to 1 ... f6 and black has material advantage.