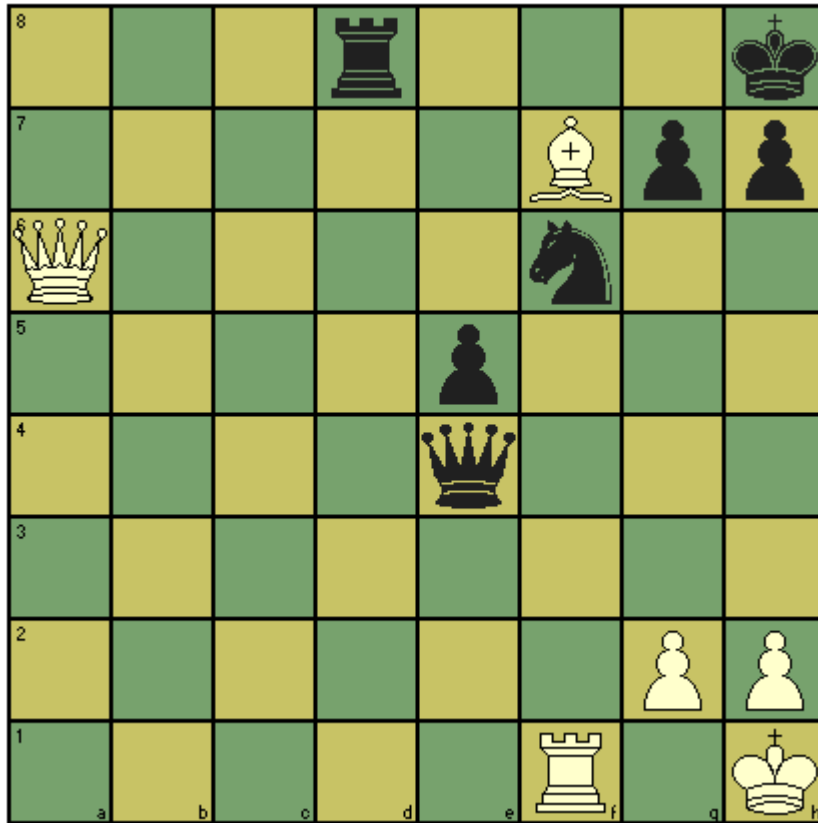


CHESS T' MINIT puzzle – March 2016

White to move – is 1. Rxf6 a great move or a blunder?



Solution: The move is a blunder. Rxf6 gxf6 leads to checkmate in 1. Black can try 1 Qe1 or 1 ... Rd1 but 2. Rf1 keeps white a piece up. However, if black finds 1 ... Qc6 white has no way to save the queen, rook and king.