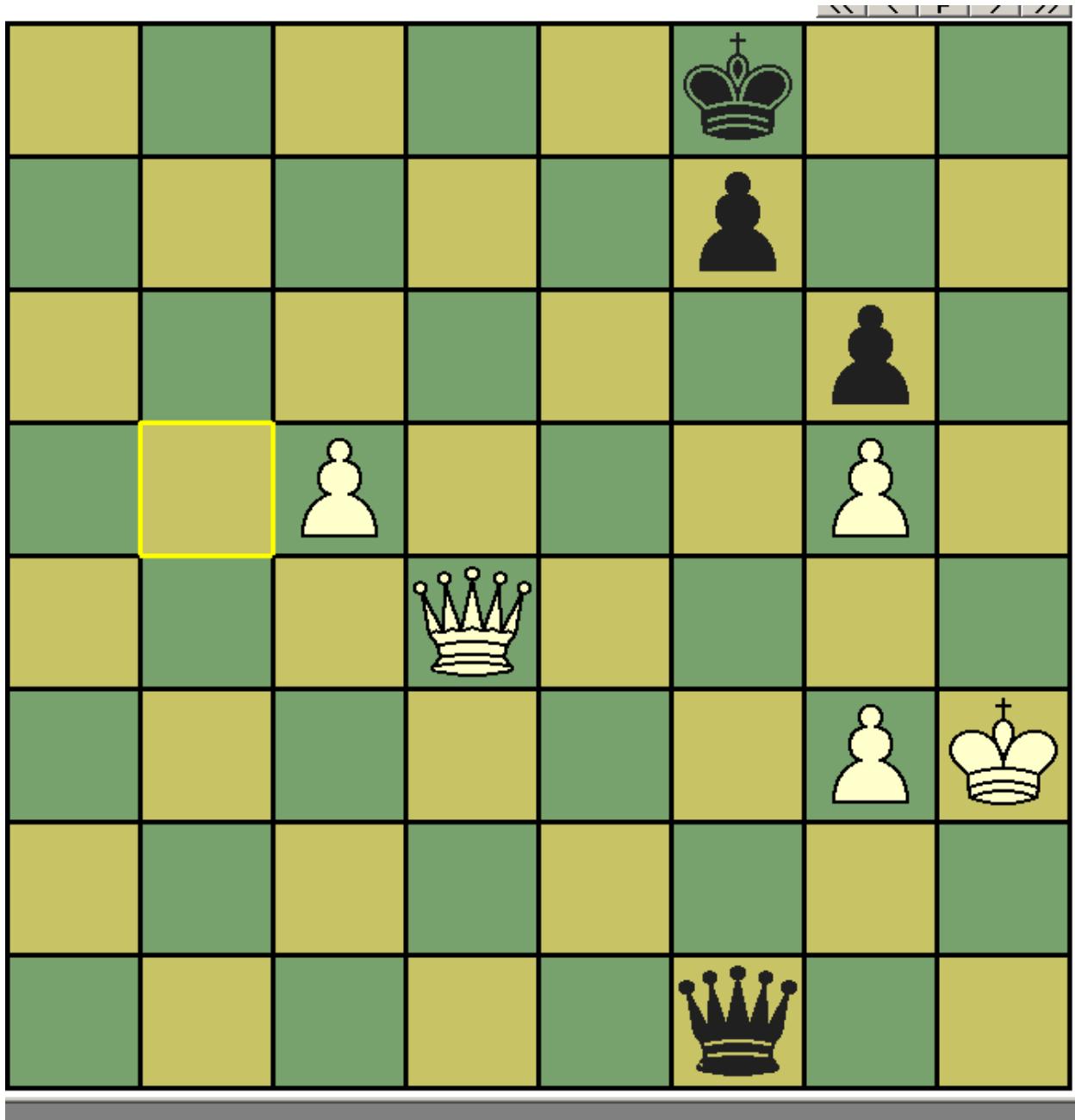


## CHESSESS puzzle – October 2012

This month's problem comes from the end of a game played in the 1955 Soviet championships. White is in check – which is the best king move and does it win or draw?



White played 1. Kg4, and was checkmated after 1 ... f5 2. Gxf6 Qf5 3. Kh4 Qh5#  
Kh4 is the best move to avoid a perpetual check (1. Kh2 Qe2 2. Kh3 Qf1 etc) and should win