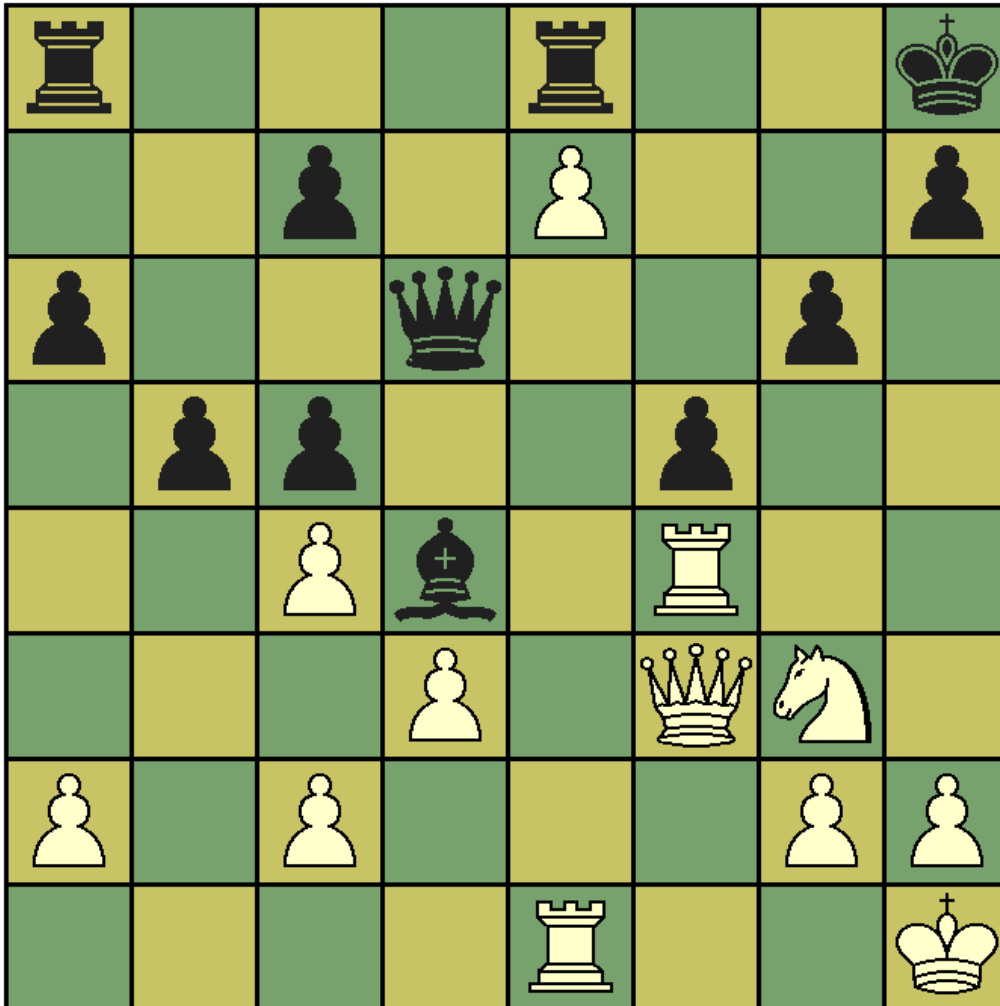


## CHES T' MINIT puzzle – June 2012

This month's problem comes from Karpov-Krabbe (1992), where the world champion Karpov played five games simultaneously without sight of the board and with time constraints. While his overall result was a most credible  $3\frac{1}{2} - 1\frac{1}{2}$ , this game he lost, although he missed a chance to win in the position shown. White to play and win.



1. Rxf5 ! gxf5 2. Qxa8 Rxa8 3. e8=Q+ Qf8 4. Qh5 and white has a big advantage. Karpov played Nxf5 and eventually lost

